

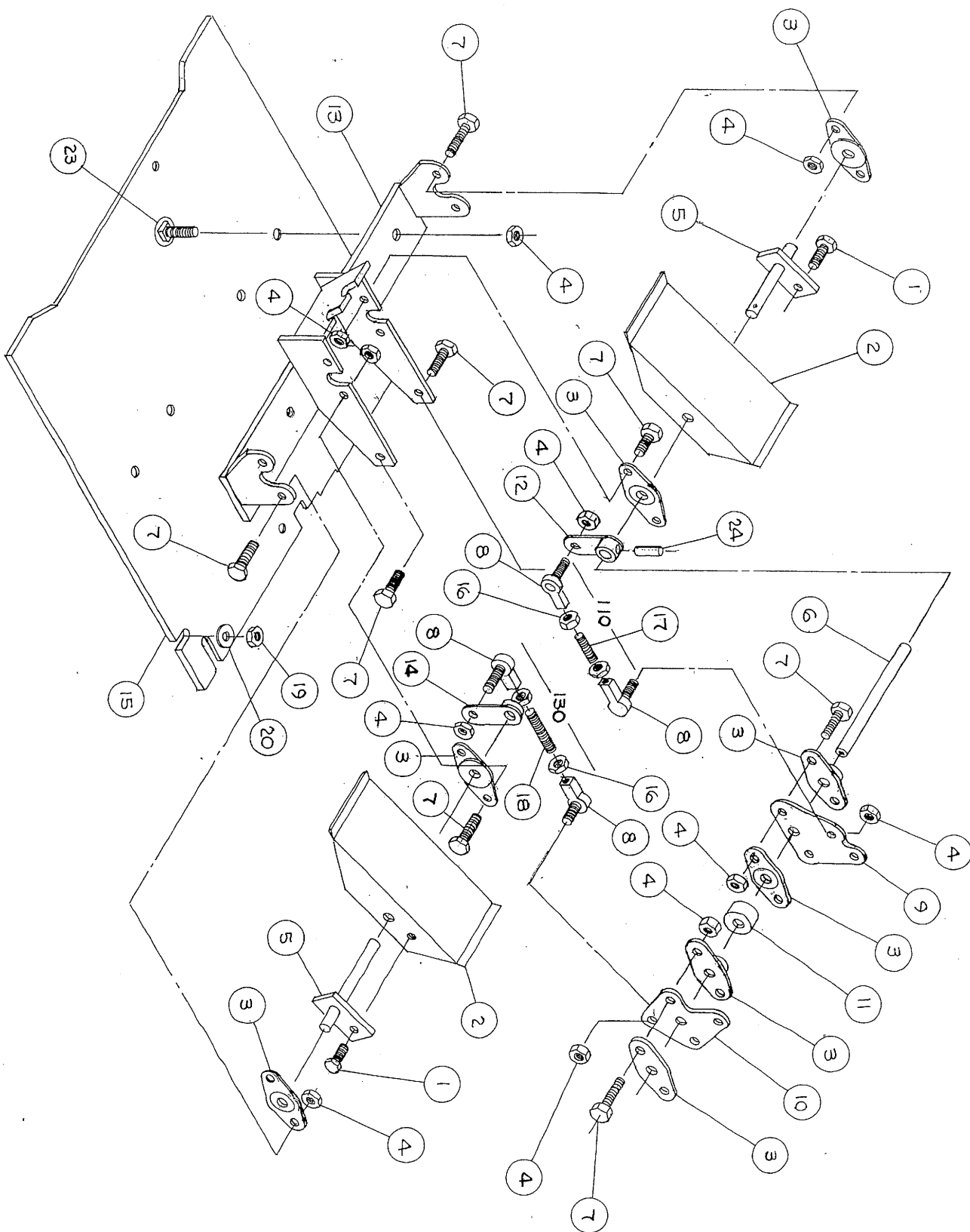
Burlington Installation Corporation  
WI201 / WF201  
Foot Controls  
for  
Case Skid Steer Loaders  
435, 445, 450, 465

Installation Instructions and  
Bill of Materials

Parts or Questions  
Contact  
Burlington Installation  
Phone: 316-943-2515  
Fax: 316-943-4448

BIC

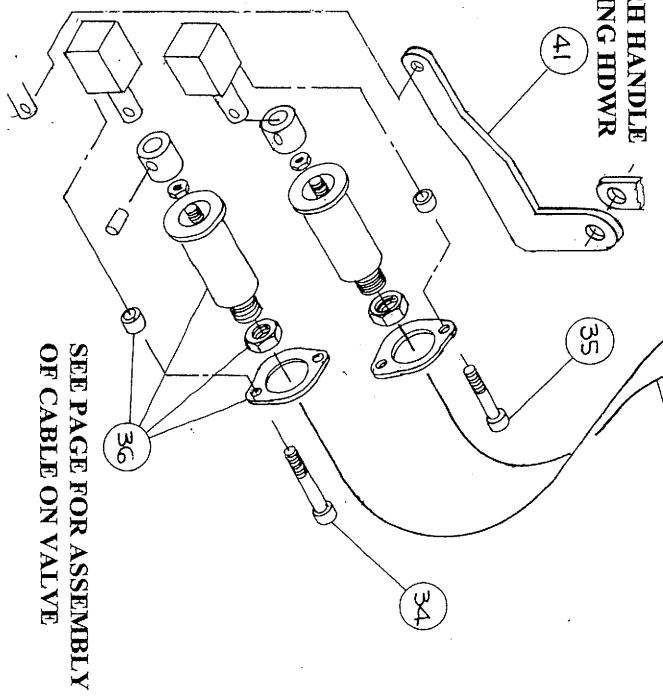
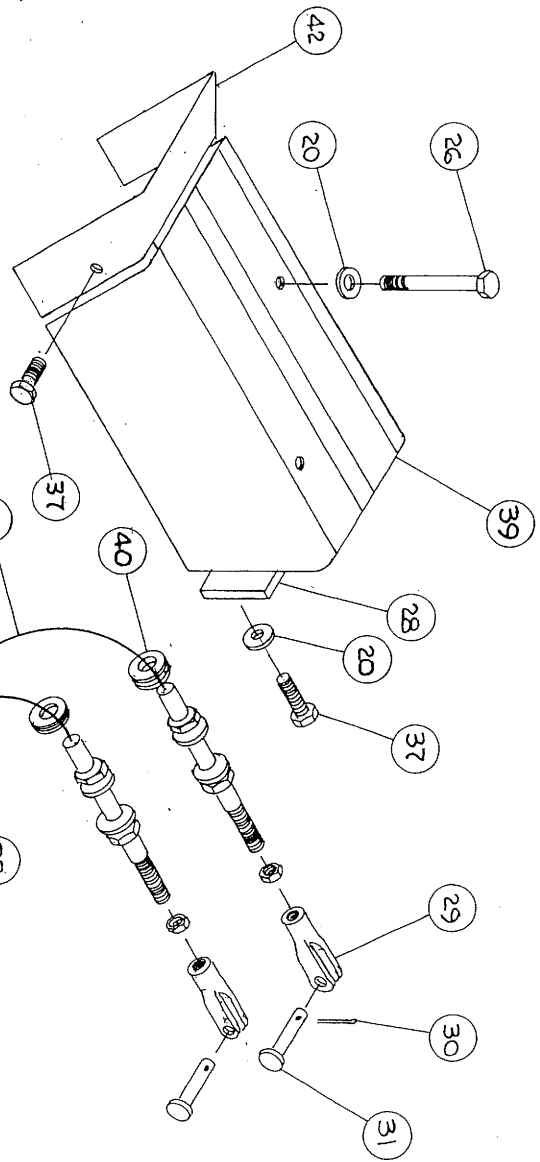
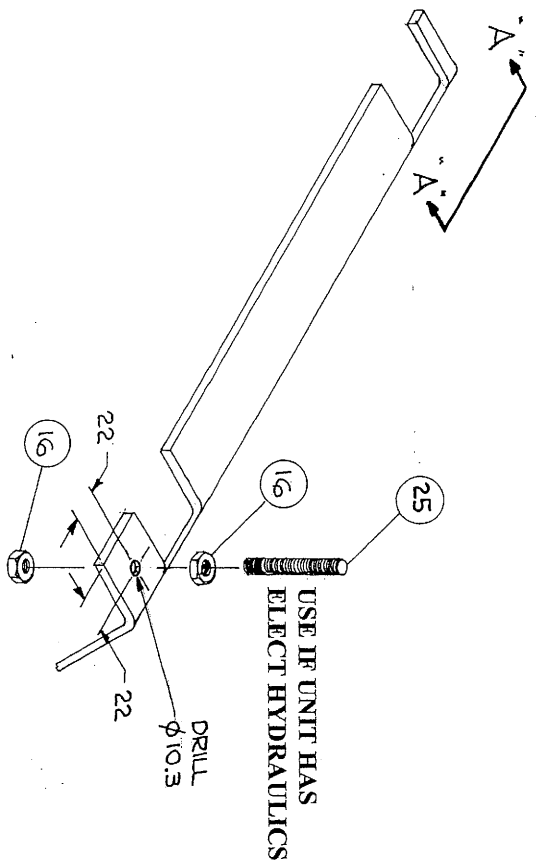
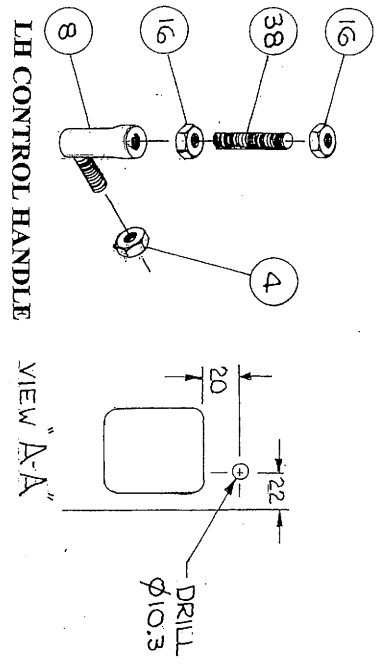
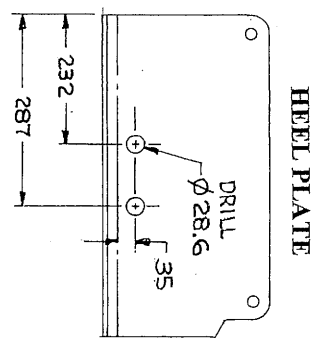
FOOT CONTROLS FOR - 435,445,450 & 465



## FOOT CONTROL - 435, 445, 450 &amp; 465

ITEM	P/N	QTY	NOUN	DESCRIPTION	REV
1	50A-0606	2	BOLT	3/8-16UNC x 3/4	
2	9622462	2	PEDAL		
3	86567251	8	BEARING		
4	30C-06	23	NUT	3/8-16UNC NYLOCK	
5	C21506	2	SHAFT/W	PEDAL	
6	C21481	1	SHAFT		
7	50A-0608	14	BOLT	3/8-16UNC x 1"	
8	230425A1	5	ROD END	BALL	
9	C21473	1	LEVER		
10	C21472	1	LEVER		
11	C21493	1	SPACER		
12	C21502	1	LEVER/W	LH	
13	C21479	1	FOOT CONTROL/W		
14	C21503	1	LEVER/W	RH	
15	C21513	1	FLOORPLATE/W		
16	31A-06	4	NUT	3/8-24UNF	
17	C21490	1	ROD	LH	
18	C21491	1	ROD	RH	
19	30A-05	2	NUT	5/16-18UNC	
20	14C-05	2	WASHER	5/16 FLAT	
21	86521667	1	DECAL	DUMP RH SIDE	
22	86521665	1	DECAL	LIFT LH SIDE	
23	C21510	4	BOLT	3/8-16UNC x 1 1/4" CARRIAGE	
24	C21511	2	PIN	7/32 x 1"	

FOOT CONTROLS FOR 435,445,450 & 465



## FOOT CONTROL

435, 445, 450 + 465

ITEM	P/N	QTY	NOUN	DESCRIPTION	REV
4	30C-06	1	NUT	3/8-16UNC NYLOCK	
8	230425A1	1	ROD END	BALL	
16	31A-06	4	NUT	3/8-24UNF	
20	14C-05	2	WASHER	5/16 FLAT	
25	C21508	1	ROD	RH LOCK	
26	50A-0548	2	BOLT	5/16-18UNC x 6"	
27	C21455	1	COVER/W		
28	C21482	1	PLATE		
29	28031477	2	YOKE END	FEMALE	
30	432-816	2	COTTER PIN	1/8 x 1"	
31	427-6106	2	CLEVIS	PIN	
32	C21500	1	CABLE	LIFT	
33	C21496	1	CABLE	BUCKET	
34	50D-0424	2	BOLT	1/4-20UNC x 3" SOCKET HD	
35	50D-0420	2	BOLT	1/4-20UNC x 2 1/2 SOCKET HD	
36	C21497	2	KIT	CABLE ENTRY	
37	50A-0508	4	BOLT	5/16-18UNC x 1"	B
38	C21507	1	ROD	LH LOCK	
39	C21512	2	STRIP	SKID	
40	11397N500	2	GROMMET		B
41	C21578	1	LINK	AUX HYD	B
42	C21540	1	COVER	EXTENSION	B

# Assembly of valve end of control cables.

1. Thread large nut and housing connector over end of cable to allow access to threads on end of cable (photo 1).
2. Thread small nut and spool connector until inside of connector is flush with end of cable and lock with nut (see photos 2 & 3).
3. Attach cable connector to valve spool using 13/16" (21mm) X 1/4" (6.35mm) pin.
4. Adjust housing connector to 1 5/16" dimension (photo 4).

